

TORNADO SLANT K160AII

WTD-K160AII



OPEN UP YOUR PRODUCTS' POSSIBILITY.
CHALLENGE NEW PRODUCTS!!



LESS PRODUCT LOSS!!

CAPACITY
250
SLICES/MIN.
(MAX)

SLICE WITH SLANT UP TO
60 DEGREE ANGLE IS POSSIBLE.



VARIATIONS WITH SLANT SLICE

Easy to adjust the angle between 0 to 60 degree.
The autmatic drive by setting for the thickness and angle.



0° slice



45° slice

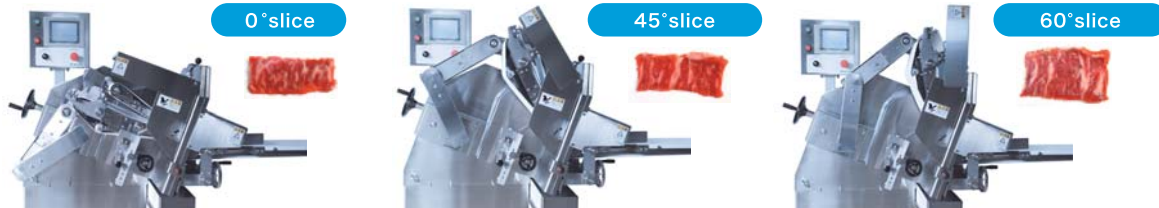


60° slice

EASY TO SLICE HORIZONTALLY AND SLANTINGLY

VARIATIONS WITH SLANT SLICE

Adjust the slice angle from 0 to 60 degree as you want. The thickness range is between 0.1 to 30 mm. The maximum slicing speed is 250 pieces per minute. Slice continuously or with any interval is possible.



EASY TO SET SLICE ANGLE

Only turn the handle and input to operation panel to set up the slice angle. Easy for everyone.



TURN THE HANDLE AND ADJUST THE ANGLE.



SET THE ANGLE ON THE SCREEN.

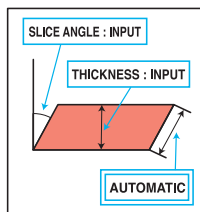


AUTOMATIC DRIVE. JUST INPUT THICKNESS AND ANGLE

All setting can be determined with the touch panel. Computer finds the best measurement to insert by the setting of the thickness and slice angle.

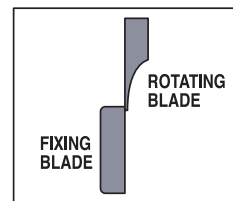


COLOR TOUCH PANEL



WATANABE, "SCISSORS CUTTING STYLE"

A rotating blade and a fixed blade hold the material, and slice sharply like scissors.



LESS PRODUCT LOSS!

With special product stopper, now it is possible to have the minimum end piece left.

NO PRODUCT STOPPER
(Previous model's end piece)



WITH PRODUCT STOPPER
(AII's end piece)

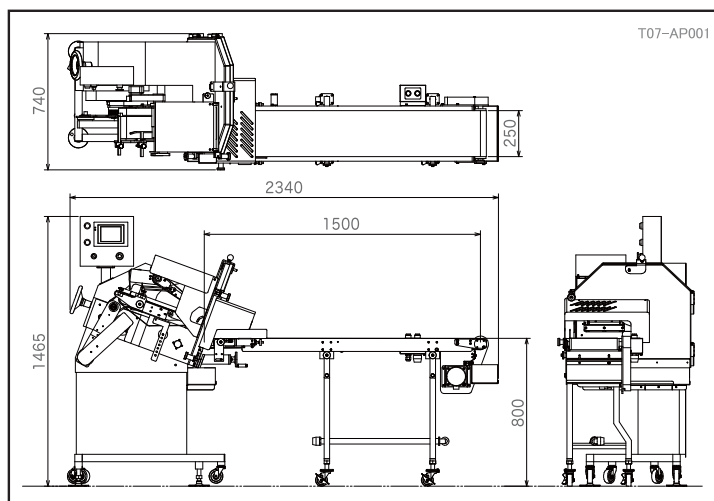


※Product loss depends on the condition of products.

■ SPECIFICATION

DIMENSIONS	W2340×D740×H1465mm
INLET CONVEYOR MOTOR	3-phase 200V 0.2kW SERVO MOTOR
OUTLET CONVEYOR MOTOR	3-phase 200V 0.09kW INVERTER CONTROL
BLADE MOTOR	3-phase 200V 0.4kW BRAKE INVERTER CONTROL
SLICE CAPACITY (DEPENDS ON SLICE ANGLE)	80~250 SLICES/MIN.
SLICEABLE DIMENSIONS	W165×L450×H40~90(DEPENDS ON SLICE ANGLE)
SLICE THICKNESS	(0.1)~30mm(0.1mm CONTROL)
SLICE TEMPERATURE	-2~3°C(DEPENDS ON MEAT, PRODUCT SIZE AND FORM)
SLICE ANGLE	0~60 DEGREE
WEIGHT	MAIN BODY:220kg、CONVEYER:55kg

■ DRAWING Please refer to the drawing for further information .



WATANABE
WATANABE FOODMACH CO.,LTD.
2-12-26 TSUYUHASHI NAKAGAWA-KU NAGOYA JAPAN
TEL052-361-8511 FAX052-361-8490
URL:http://www.foodmach.co.jp/

SALES AGENT